

Stream-Shine

Violoncello

Colin Riley

Slow and poised ♩ = 52

2 6

12 Solo Vln. cue

16 con sord

ppp

20

ppp

26 div.

ppp *pp*

31

ppp *pp*

36

37 38 39 40

41

42 43 44 45

ppp *pp*

46

47 48 49 50 51

pp *pp*

52

A Moving on slightly ♩ = 52

4

53 54 55 56 57 58

D.B. cue
(sounds 8ve below)

59

unis.
senza sord

60 61 62 63

ppp *mp*

64

Moving on even more ♩ = 60

4

65 66 67 68 69 70

ppp

71

72 73 74 75

mf

76

6

D.B. cue

accel.

85

ppp *mp*

B Energised ♩ = 90

90

mf *mp* pizz

97

9

106

Vla. cue *f* arco *ff*

109

f *ff* *fff*

C Fanfare-like ♩ = 90

115

pp *ff* 2

120

pp *ff*

124

pp *ff*

128 **D** Dancing ♩ = 104

Vln. I cue (pizz.) Vln. II cue (pizz.) Vln. I cue (pizz.) Vla. cue

134

pp *mf* *pp* *mf*

142

12

154 **E**

D.B. cue (pizz.) Vln. II cue

160

mp *p* *mf*

165

pizz. *mp* *mf* *f*

Violoncello

170

3

arco

mp > *p* < *mf*

177

mp

182

pizz.

mp *f*

2

187

arco

mf > *p* < *mf*

2

193

pizz.

mp *mp* *f*

198

11

[F] Child-like ♩ = 104

14

Solo Vln. cue
(sounds 8ve above)

223

5

Perc 1 - B.D. cue

227 G
(pizz.)

p *f* *p* *f*

Detailed description: This musical staff covers measures 227 to 231. It begins with a box containing the letter 'G'. The first measure is marked with a piano (*p*) dynamic and a pizzicato (*pizz.*) instruction. The second measure is marked with a forte (*f*) dynamic. The third measure contains a whole rest. The fourth measure is marked with a piano (*p*) dynamic, and the fifth measure is marked with a forte (*f*) dynamic. The staff uses a bass clef and a 4/4 time signature.

232

p *f* *p* *f*

Detailed description: This musical staff covers measures 232 to 236. The first measure is marked with a piano (*p*) dynamic, the second with a forte (*f*) dynamic, the third with a piano (*p*) dynamic, and the fourth with a forte (*f*) dynamic. The fifth measure contains a whole rest. The staff uses a bass clef and a 4/4 time signature.

237

f

Detailed description: This musical staff covers measures 237 to 241. The first measure is marked with a forte (*f*) dynamic. The second measure contains a whole rest. The third measure has a half note. The fourth measure contains a whole rest. The fifth measure has a half note. The staff uses a bass clef and a 3/4 time signature.

242

Fl. 1, Cl. 1 & Bsn. 1 cue

ff

Detailed description: This musical staff covers measures 242 to 246. The first measure is marked with a fortissimo (*ff*) dynamic. The second measure contains a whole rest. The third measure has a half note. The fourth measure contains a whole rest. The fifth measure has a half note. The staff uses a bass clef and a 4/4 time signature.

247 (Fl. 1, Cl. 1 & Bsn. 1 cue cont.) H

(pizz.)

pp *f*

Detailed description: This musical staff covers measures 247 to 251. The first two measures are marked with a pianissimo (*pp*) dynamic and include a pizzicato (*pizz.*) instruction. The third measure contains a whole rest. The fourth measure is marked with a piano (*p*) dynamic, and the fifth measure is marked with a forte (*f*) dynamic. A box containing the letter 'H' is positioned above the fourth measure. The staff uses a bass clef and a 4/4 time signature.

252

pp *f* *p*

Detailed description: This musical staff covers measures 252 to 256. The first measure contains a whole rest. The second measure is marked with a pianissimo (*pp*) dynamic, the third with a forte (*f*) dynamic, and the fourth with a piano (*p*) dynamic. The fifth measure contains a whole rest. The staff uses a bass clef and a 4/4 time signature.

257

9

Detailed description: This musical staff covers measures 257 to 259. The first measure contains a whole rest. The second measure is marked with a piano (*p*) dynamic, the third with a forte (*f*) dynamic, and the fourth with a piano (*p*) dynamic. The fifth measure contains a whole rest. A thick horizontal bar is drawn across the staff from the beginning of the fifth measure to the end of the staff. The number '9' is written above the bar. The staff uses a bass clef and a 4/4 time signature.

Violoncello

269 Hn. 1 & 2 cue

272 (pizz.)

277

282

286 Fl. 1, Cl. 1 & Bsn. 1 cue

293 (pizz.) Fanfare-like ♩ = 104

298 arco

303

307 *pp* *ff*

311 *33* *4* *rit.*

348 Solo Vln. cue (end of candeza)

Like the beginning ♩ = 52

352 con sord *ppp* *pp*

357 *ppp* *pp*

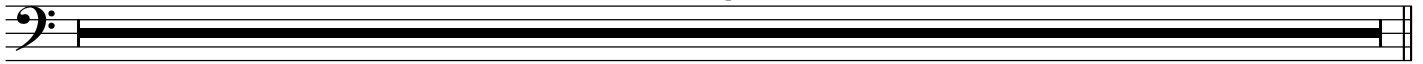
362 *ppp* *pp*

367 *ppp* *pp*

373 *ppp* *pp*

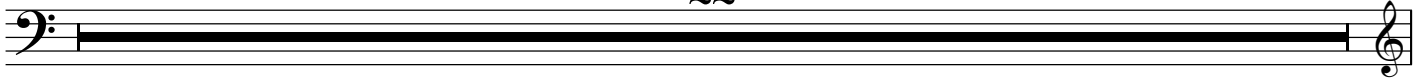
378

3

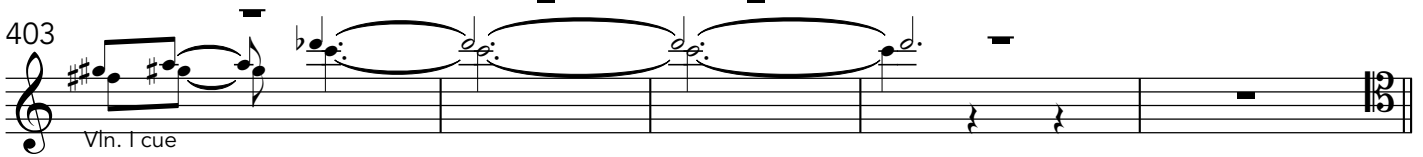


381 M

22



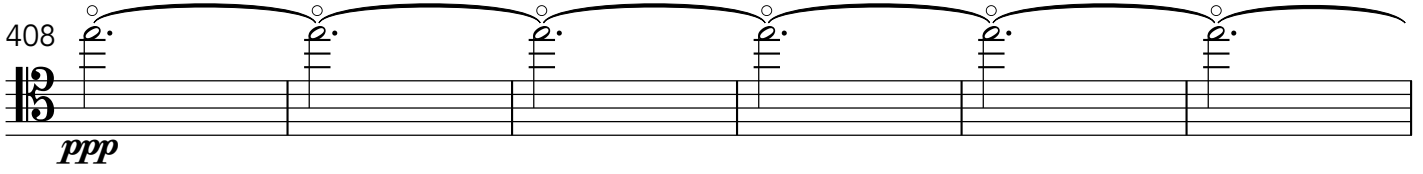
403



N Slightly Slower ♩ = 48

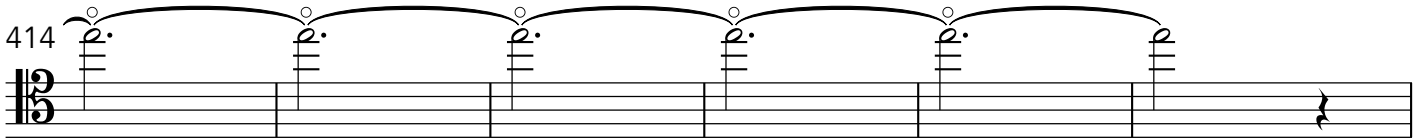
unis.
senza sord

408



ppp

414



420

28

