

Stream-Shine

Harp

Colin Riley

Slow and poised ♩ = 52

17

Vln. I cue
(Vln. II, Vla.
& Vc. also enter) E, F, G, A,
Bb, C, D

pp < p

33

Perc. 1 - Glock. cue
(Sounds 15ma above)

pp < p

40

pp < p

48

B

p *mf* *p*

A Moving on slightly ♩ = 52

53 Solo Vln. cue

59

Harp

Moving on even more ♩ = 60

E, F#, G#, A,

B, C#, D

64 *mp* G, C C#

68 *p* *mf* *p* G# D# D G

73 3 6

82 Tpt. 1 & 2 cue Perc. 2 - Chinese Cym. cue

88 *ppp* *mf* C B Energised ♩ = 90 6

97 Ob. 1 cue (With Cl. 1 & 2) E, F#, G, A, B, C#, D *f*

102 *f* *ff* G# Eb Bb B# E, F, G Eb

105 G# B Bb E, F#

f *ff* *f* *ff*

108

C Fanfare-like ♩ = 90

4

Fl. 1 & Ob. 1 cue

113 E, F#, G, A, B, C#, D

f

117

f

121 G#

f

125 G G#

ff

128 D Dancing ♩ = 104 E

26 45

199

Tpt. 1 & 2 cue

204

C#

F Child-like ♩ = 104
Enter with Fl., Ob. & Cl.

209

mf *mf*

218

mf *mf*

224

G

237

Perc 2 - Hi-hat & Woodblock cue
Perc 2 - Crot. cue

H
E, F#, G#, A,
B, C#, D#

250

p *mf* *p* *mf*

255

p *mf* *p* *mf*

258

p *mf*

262

p *mf* *mp* *f*

266

mp *f* *mp* *f* *mp* *f*

270

2 *8*

280 Solo Vln. cue

284

6

Harp

E, F, Gb, Ab,
287 B, C#, D#

Musical notation for harp, measures 287-294. The piece begins with a half note E4 (mf), followed by a half note F4 (ff), and a half note Gb4 (ff). A 4-measure rest follows. The piece concludes with a half note Ab4 (pp) and a half note Bb4 (pp).

J Fanfare-like ♩ = 104

295 E, F#, G, A,
B, C#, D

Musical notation for harp, measures 295-303. The piece begins with a half note E4 (f), followed by a half note F#4 (f), and a half note G4 (f). The piece continues with a series of eighth and sixteenth notes, including A4, B4, C#4, and D4.

Musical notation for harp, measures 300-303. The piece continues with a series of eighth and sixteenth notes, including E4, F#4, G4, and A4.

Musical notation for harp, measures 304-307. The piece continues with a series of eighth and sixteenth notes, including G#4, A4, B4, and C#4.

Musical notation for harp, measures 308-315. The piece begins with a half note G4 (ff), followed by a half note A4 (ff), and a half note B4 (ff). The piece continues with a series of eighth and sixteenth notes, including C#4, D4, and E4. A 33-measure rest follows.

rit. L Like the beginning ♩ = 52

344 8

Vln. I cue
(Vln. II, Vla. & Vc. also enter) E, F, G, A,
Bb, C, D

pp < *p*

355 4 3

pp < *p*

364 Perc.1 - Glock. cue
(sounds 15ma above)

368 4 B

pp < *p* *p*

376

mf *mf* *p*

8

Harp

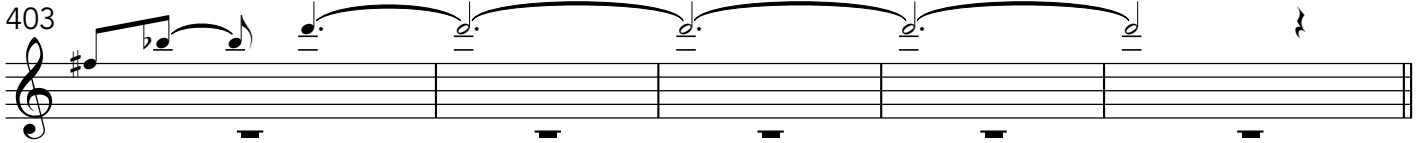
M

381

22



Fl. 1 cue (sounds 8ve above)



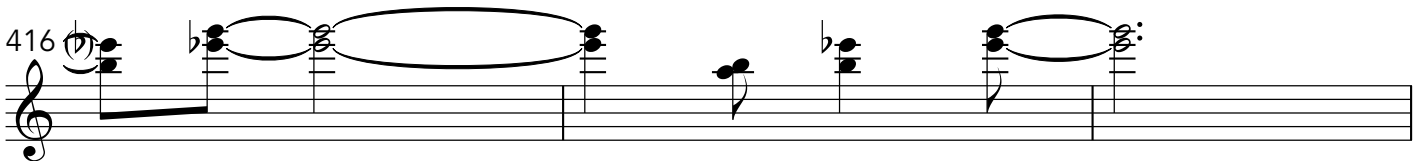
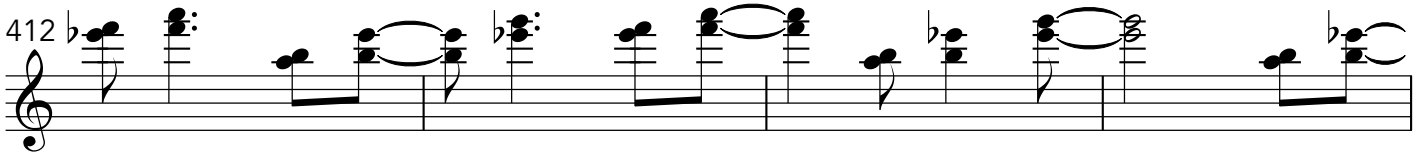
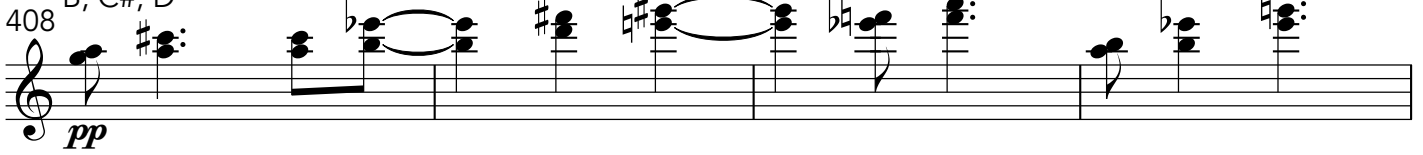
N Slightly Slower ♩ = 48

Eb, F#, G, A,
B, C#, D

E, G#

Eb, F

G



419

p

Detailed description: This musical staff shows measure 419. It begins with a treble clef and a key signature of one flat. The first two measures contain rests. The third measure starts with a piano (*p*) dynamic and features a half note chord of G4 and Bb4. The fourth measure continues with a half note chord of G4 and Bb4. The fifth measure contains a whole note chord of G4, Bb4, and D5. The sixth measure contains a whole note chord of G4, Bb4, and D5. The seventh measure contains a whole note chord of G4, Bb4, and D5. The eighth measure contains a whole rest.

423

p 3 *p*

Detailed description: This musical staff shows measure 423. It begins with a treble clef and a key signature of one flat. The first measure contains a half note chord of G4 and Bb4. The second measure contains a half note chord of G4 and Bb4. The third measure contains a half note chord of G4 and Bb4. The fourth measure contains a half note chord of G4 and Bb4. The fifth measure contains a half note chord of G4 and Bb4. The sixth measure contains a half note chord of G4 and Bb4. The seventh measure contains a half note chord of G4 and Bb4. The eighth measure contains a half note chord of G4 and Bb4.

430

4 *pp*

Detailed description: This musical staff shows measure 430. It begins with a treble clef and a key signature of one flat. The first measure contains a half note chord of G4 and Bb4. The second measure contains a half note chord of G4 and Bb4. The third measure contains a half note chord of G4 and Bb4. The fourth measure contains a half note chord of G4 and Bb4. The fifth measure contains a half note chord of G4 and Bb4. The sixth measure contains a half note chord of G4 and Bb4. The seventh measure contains a half note chord of G4 and Bb4. The eighth measure contains a half note chord of G4 and Bb4.

437

2 Solo Vln. cue

Detailed description: This musical staff shows measure 437. It begins with a treble clef and a key signature of one flat. The first measure contains a half note chord of G4 and Bb4. The second measure contains a half note chord of G4 and Bb4. The third measure contains a half note chord of G4 and Bb4. The fourth measure contains a half note chord of G4 and Bb4. The fifth measure contains a half note chord of G4 and Bb4. The sixth measure contains a half note chord of G4 and Bb4. The seventh measure contains a half note chord of G4 and Bb4. The eighth measure contains a half note chord of G4 and Bb4.

Enter with Perc. 1 & 2

442

ppp 3

Detailed description: This musical staff shows measure 442. It begins with a treble clef and a key signature of one flat. The first measure contains a half note chord of G4 and Bb4. The second measure contains a half note chord of G4 and Bb4. The third measure contains a half note chord of G4 and Bb4. The fourth measure contains a half note chord of G4 and Bb4. The fifth measure contains a half note chord of G4 and Bb4. The sixth measure contains a half note chord of G4 and Bb4. The seventh measure contains a half note chord of G4 and Bb4. The eighth measure contains a half note chord of G4 and Bb4.