

# Stream-Shine

Contrabass

Colin Riley

Slow and poised ♩ = 52

2 6

Solo Vln. cue  
(sounds 8ve above)

12

16 *ppp*

21 *ppp*

**A** Moving on slightly ♩ = 52

Solo Vln. cue

26 27

57 5 *mp* 12

76 Hn. 1 & 2 cue

82 *p* *mf* accel. . . . .

2 Contrabass

87 **B** Energised ♩ = 90  
pizz.  
*mp*

94 **13**

107 Vc. cue arco  
*f* *ff* *f* *ff*

110 **C** Fanfare-like ♩ = 90  
*ff* *fff*

114 **3** **5**

123 Vc. cue pizz.  
*ff*

**D** Dancing ♩ = 104  
128 **20**

148 Vln. II cue (pizz.) Vln. I cue (pizz.) Vln. II cue (pizz.)

**E** 154 pizz.  
*ff* *mp*

159 (pizz.)  
*mp* *mp*

164  
*mp* *f*

169  
*mp* 3

176 (pizz.)  
*mp* *mp*

181  
*mp* *f* *mp*

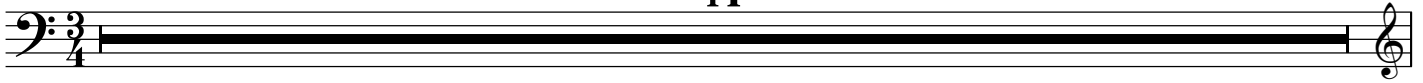
186  
*mp*

191  
*mp* *mp*

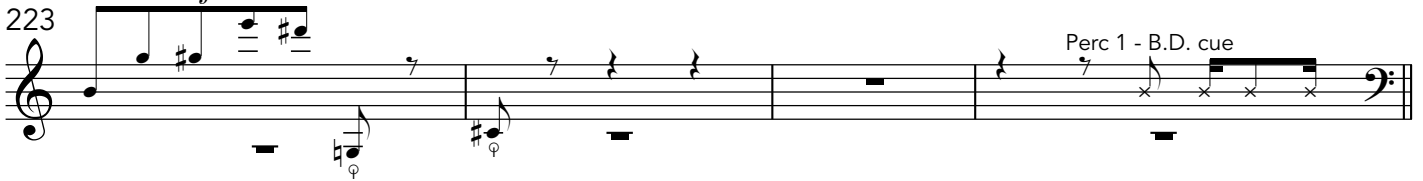
196  
*f* 11

209 **F** Child-like ♩ = 104

14



Solo Vln. cue  
(sounds 8ve above)



227 **G**  
(pizz.)



245 Fl. 1, Cl. 1 & Bsn. 1 cue



249 (pizz.) **H**



253

pp f p

Musical notation for measure 253 in bass clef. It consists of four measures. The first measure starts with a piano (*pp*) dynamic and contains a quarter rest followed by a quarter note G2. The second measure contains a quarter rest followed by a quarter note A2. The third measure starts with a forte (*f*) dynamic and contains a quarter rest followed by a quarter note Bb2. The fourth measure starts with a piano (*p*) dynamic and contains a quarter rest followed by a quarter note C3. There are fermatas over the notes in the second and fourth measures.

257

9

Musical notation for measure 257 in bass clef. It consists of four measures. The first measure is a whole rest. The second measure contains a quarter rest followed by a quarter note G2. The third measure contains a quarter rest followed by a quarter note A2. The fourth measure is a whole rest with a fermata above it and the number '9' above the staff.

269

Hn. 1 & 2 cue

Musical notation for measure 269 in treble clef. It consists of four measures. The first measure is a whole rest. The second measure contains a quarter rest followed by a quarter note G4. The third measure contains a quarter rest followed by a quarter note A4. The fourth measure contains a quarter rest followed by a quarter note B4. There are fermatas under the notes in the second and third measures.

272

(pizz.)

Vc. cue  
(sounds 8ve above)

*f*

Musical notation for measure 272 in bass clef. It consists of four measures. The first measure starts with a piano (*pizz.*) dynamic and contains a quarter rest followed by a quarter note G2. The second measure is a whole rest. The third measure is a whole rest. The fourth measure contains a quarter rest followed by a quarter note A2. There are fermatas under the notes in the first and fourth measures.

(Vc. cue cont.)

277

(pizz.)

*f*

Musical notation for measure 277 in bass clef. It consists of four measures. The first measure is a whole rest. The second measure is a whole rest. The third measure is a whole rest. The fourth measure starts with a piano (*pizz.*) dynamic and contains a quarter rest followed by a quarter note G2. There are fermatas under the notes in the first, second, and third measures.

281

8

Fl. 1, Cl. 1 & Bsn. 1 cue

Musical notation for measure 281 in bass clef. It consists of four measures. The first measure is a whole rest with the number '8' above it. The second measure contains a quarter rest followed by a quarter note G2. The third measure contains a quarter rest followed by a quarter note A2. The fourth measure contains a quarter rest followed by a quarter note B2. There are fermatas under the notes in the second and third measures.

293

(pizz.)

Fanfare-like ♩ = 104

3

*pp*

Musical notation for measure 293 in bass clef. It consists of four measures. The first measure starts with a piano (*pp*) dynamic and contains a quarter rest followed by a quarter note G2. The second measure is a whole rest. The third measure is a whole rest. The fourth measure is a whole rest with a fermata above it and the number '3' above the staff. The time signature changes from 4/4 to 3/4 in the fourth measure.

Contrabass

300

2

Vc. cue

306

(Vc. cue cont.)

K

(pizz.)

*ff*

311

33

rit. . . . . 8

L Like the beginning ♩ = 52

352

22

374

Hp. cue (sounds 8ve above)

381

M

arco

*ff*

387

N Slightly Slower ♩ = 48

21

40